



Faith Lutheran College, Redlands

*Faith in Christ... prepared for life*

## ALTERNATE LEARNING Pathway



Years 11 & 12  
**2014 - 2015**

F  
A  
I  
T  
H

## ALTERNATE LEARNING PATHWAY

Options that are vocational alternatives to those that are available as on-campus electives are:

1. *School-based traineeships & apprenticeships (SATs)* Pg.3
2. *TAFE Partnership with Schools Program (PWS)* Pg.5
3. *Skills Tech Australia VET in Schools Program (VETIS)* Pg.7
4. *Southbank Institute of Technology –Tertiary Entrance Program (STEP)* Pg.9

Students who undertake an off-campus program use their VET Diary as a means of assisting them to keep up-to-date with their college subjects for the work missed on their day off-campus. The VET Diary section is found in the Student Diary in the pages after each Term.

Students undertaking an off-campus program are encouraged **not** to enrol in Physics, Chemistry, Maths B, or Maths C.

Please note that there may be some fees payable for these courses. It is the responsibility of the family to pay these fees. The fee will vary, depending on the material requirements of the course. All fees payable are at a much reduced cost to full fee-paying students, as secondary school students pay only the cost of material used in the program.



## 1. SCHOOL-BASED APPRENTICESHIPS & TRAINEESHIPS

School-based traineeships and apprenticeships (SATs) allow students in Years 11 and 12 to work for an employer, train towards a recognised qualification, and complete their secondary school studies, all at the same time. They are available across a wide range of vocational options. SATs provide students with:

- Qualifications or skills that are recognised Australia-wide.
- Credit points towards the Queensland Certificate of Education (QCE) hands-on experience in a workplace
- Paid employment
- Smooth transition from secondary school to work and / or further study.

A SAT is a model of paid employment, and therefore the employer needs to offer to employ, rather than students applying to enrol as a school-based.

The industry liaison organisation, Redlands Workplace Training Group (RWTG) is available to assist students obtain a school-based apprenticeship/traineeship. A representative from RWTG is on campus one afternoon each week (Friday) and is available for interviews at that time. In the first instance, please contact the Voc Ed/Careers Coordinator (Mrs Lander).

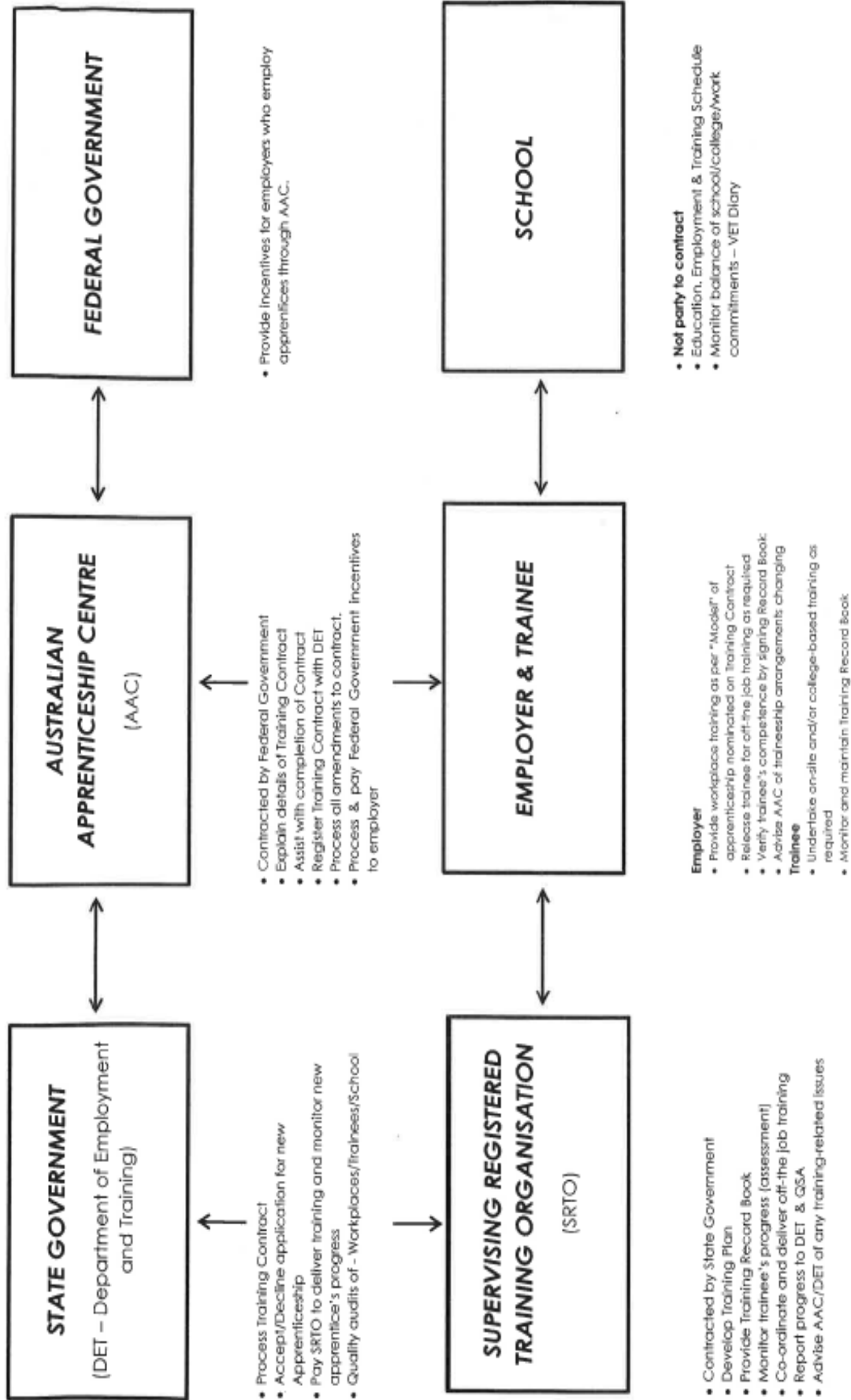
There are a number of stakeholders involved in the administration of school-based traineeships and apprenticeships. They are:

- State Government
- Australian Apprenticeship Centre
- Federal Government
- Supervising Registered Training Organisation
- Employer & Training Organisation
- Employer & Trainee / Apprentice
- College

For more information about traineeships and apprenticeships please refer to:

[www.deta.qld.gov.au](http://www.deta.qld.gov.au) or [www.apprenticeshipsinfo.qld.gov.au](http://www.apprenticeshipsinfo.qld.gov.au)





## 2. TAFE PARTNERSHIP WITH SCHOOLS PROGRAM

TAFE Queensland offer a Partnership with Schools program that allows students in Years 11 and 12 the opportunity to complete a Certificate II or III qualification. These qualifications contribute credit points towards their Queensland Certificate of Education (QCE).

*(A “sample” list of qualifications offered is listed on the opposite page.)*

This certificate can be used as a springboard for further training at TAFE, and then on to university.

### Benefits for Students

- Access a wider range of program offerings through school
- Gain credit points towards the Queensland Certificate of Education
- Gain vocational skills and qualifications while completing Years 11 and 12
- Gain a competitive edge in the employment marketplace
- Gain credit towards further study
- Learn from qualified industry professionals

### Application Process

Students nominate to participate in their chosen TAFE program through the Voc Ed/Careers Coordinator (Mrs Lander). These nominations are then returned to TAFE for processing.

### What next?

- Places offered from nominations received by the due date
- Any students not offered a place in the first instance will be waitlisted for places that may become available
- Nominations received after the due date will be offered places where available or will be waitlisted
- Schools will be notified of successfully placed students and provided with enrolment packs for each of these students
- Students offered a place **must** enrol with TAFE by the nominated date to secure their place. Any students having difficulty enrolling by this date can contact TAFE to discuss alternative arrangements
- Students offered places after the first round will be given four weeks from the date of offer to enrol
- Once TAFE advises that they are accepting Expressions of Interest, students are advised of both opening and closing dates for nominations.

For more information about the TAFE Partnership with Schools Partnership please refer to:

<http://www.msit.tafe.qld.gov.au>



## PWS On-campus Summary for 2012

Campus Locations AH- Alexandra Hills, LOG- Loganlea, MTG-Mt Gravatt, YER- Yeronga

Program	Campus Day	Campus	Program Length
***Proposed Beauty skill sets	Thursday	LOG	6 month sets
<sup>A</sup> Cert III Aged Care – Yr12 students only	Mtly workshops, voc placement Sept school holidays compulsory	AH, LOG	1 year
Cert III Allied Health <sup>A</sup> -Yr12 students only	Mtly workshops, voc placement Sept school holidays compulsory	LOG	1 year
Cert II Animal Studies	Friday	AH, YER	1 year
**Cert II Applied Fashion Design	Friday	MTG	2 year
**Cert III Business	Friday	LOG	2 year
**Cert III Business (Legal)	Friday	YER	2 year
**Cert III Children's Services	Wed 3, Thurs all day	AH	2 year
**Cert III Children's Services	Wed 3, Tues all day	LOG	2 year
**Cert III Design Fund. – Graphic	Wednesday	MTG	2 year
**Cert III Design Fund. – Photo Imaging	Thursday	MTG	2 year
Cert III Events	Thursday-Friday	LOG, MTG	1 year
Cert II Hairdressing	Monday	LOG	2 year
Cert II Hospitality <sup>A</sup>	Monday	LOG	2 year
Cert II Hospitality (Kitchen Operations) <sup>A</sup>	Monday	LOG	2 year
**Cert III Horticulture (Landscape Construct)	Friday	MTG	2 year
**Cert III Information Technology	Thursday	AH, LOG	2 year
**Cert III Live Prod. Theatre, Events	Tuesday	AH	2 year
**Cert III in Media – Animation & Motion	Friday	MTG	2 year
**Cert III in Media – i media & apps	Friday	MTG	2 year
**Cert III in Media – Film & TV Production	Friday	MTG	2 year
**Cert III Music	Friday	MTG	2 year
**Cert III Performing Arts	Tuesday	AH	2 year
Cert II Retail	Thursday	MTG	6 months
Cert III Tourism	Friday	MTG	1 year
**Cert III Visual Arts and Contemporary Craft	Thursday	AH	2 year

### Please note

<sup>A</sup> Administration fee will be added to the program fee and covers student ID card and technology fee  
<sup>\*\*</sup> Applicants for 2 year programs – must be in Year 11 in 2012.

<sup>A</sup> Uniform or Equipment to be paid by the student  
 Uniforms – Aged Care, Allied Health & Hospitality  
 Steel Capped boots – Horticulture

Disclaimer – Information correct at printing however changes may occur



**Metropolitan South**  
 INSTITUTE OF TAFE

## Partnership with School (PWS) 2012 Delivery

### Important Dates – guide only

June-July – PWS will delivery a short school presentation to Yr10/11 students. This will be at the schools request bookings are essential.

Mid - July – PWS -Program Guide is released. Electronic and hard copies will be forwarded to all schools for distribution. Please watch our website for the pdf version. <http://www.msit.tafe.qld.gov.au/courses/school.html>

Beginning August – PWS information sessions for proposed PWS programs will be held at the campus of delivery. Students and parents are strongly encouraged to attend. Presenters will be educational staff. Questions are encouraged if time allows a short tour of the facilities will be offered.

Mid-August – Expressions of Interest (EOI) will be opened these can only be completed by secondary schools on behalf of the student

Students that require learning/physical support on their TAFE day must meet with an MSIT Disability Officer at the campus delivery. This meeting must be completed to be eligible for an enrolment at TAFE.

September – Programs enquiries pre-entry, interview or assessment will be conducted Applications will be processed and enrolment offers will be sent electronically to students.

Enrolment offers will be valid for 10 days only, after this date places will be reallocated.

NB: Places can only be secured when an enrolment and payment is made, or a deposit on a payment plan. Application for a payment plan for students under 18 years of age must be made by parent/guardian and completed at MSIT enrolment centre. Places will not be reserved

\*All information printed is correct at time of print.



**Metropolitan South**  
 INSTITUTE OF TAFE



### 3. SKILLS TECH AUSTRALIA

Skills Tech Australia is the 'trade' arm of TAFE. They offer a VET in Schools (VETIS) program that provides pathways through a range of trade and technical training areas for students in their senior phase of learning. These programs are designed to provide practical, hands-on training in their chosen trade area as well as valuable employability skills.

Programs of learning undertaken with Skills Tech Australia give students a head start into further study, the workplace or a full-time apprenticeship (or even start and apprenticeship whilst still at school).

#### Benefits for Students

- Access a wider range of program offerings through school
- Gain credit points towards the Queensland Certificate of Education
- Gain real vocational skills and qualifications while completing high school
- Gain a competitive edge in the employment marketplace
- Gain credit towards further study
- Learn from qualified industry professionals

#### Application Process

Students nominate to participate in their chosen SkillsTech program through the Voc Ed/Careers Coordinator (Mrs Lander). These nominations are then returned to Skills Tech Australia.

#### What next?

- Places offered from nominations received by the due date
- Any students not offered a place in the first instance will be waitlisted for places that may become available
- Nominations received after the due date will be offered places where available or will be waitlisted
- Schools will be notified of successfully placed students.
- Enrolment packs are sent directly to the students
- Students offered a place **must** enrol with Skills Tech by the nominated date to secure their place. Any students having difficulty enrolling by this date can contact Skills Tech to discuss alternative arrangements
- Students offered places after the first round are given specified time to accept the offer, enrol and pay.

For more information about Skills Tech Australia please refer to:

[www.skillstech.tafe.qld.gov.au](http://www.skillstech.tafe.qld.gov.au)



### Semester 1, 2012 commencement

	Semester 1, 2012 commencement				
	Code	Program name	Mode	Duration	QCE points
<b>North</b>	<b>Bracken Ridge</b>				
	CPC10108	Certificate I in Construction	1 day/week	1 year	3
	MEM10105	Certificate I in Engineering (Diesel Fitting)	1 day/week	1 year	3
	MEM10105	Certificate I in Engineering (Metal Fabrication)	1 day/week	1 year	3
	AUR20408	Certificate II in Automotive Electrical	1 day/week	2 years	4
	AUR20705	Certificate II in Automotive Mechanical	1 day/week	2 years	4
	AUR20305	Certificate II in Bicycle Mechanics	1 day/week	18 months	4
	CPC50310	Para-professional Construction Pathway	1 day/week	1 year	4
	UEE22007	Certificate II in Electrotechnology (Career Start) (Electrical) <small>* Pending registration, this program may be offered as UEE22010</small>	1 day/week 2 days/week	2 years 1 year	4 4
	<b>Eagle Farm</b>				
39278QLD	Certificate I in Plumbing Services	1 day/week	2 years	3	
UEE20207	Certificate II in Data and Voice Communications <small>* Pending registration, this program may be offered as UEE20211</small>	1 day/week	1 year	4	
UEE22007	Certificate II in Electrotechnology (Career Start) (Electronics) <small>* Pending registration, this program may be offered as UEE22010</small>	1 day/week	2 years	4	

	Semester 1, 2012 commencement				
	Code	Program name	Mode	Duration	QCE points
<b>South</b>	<b>Acacia Ridge</b>				
	CPC10108	Certificate I in Construction (Painting and Decorating)	1 day/week	1 year	3
	MEM10105	Certificate I in Engineering (Diesel Fitting)	1 day/week	1 year	3
	39278QLD	Certificate I in Plumbing Services	1 day/week	2 years	3
	AUR20705	Certificate II in Automotive Mechanical	1 day/week	2 years	4
	AUR20408	Certificate II in Automotive Electrical	1 day/week	2 years	4
	CPC20208	Certificate II in Construction Pathways	1 day/week	2 years	4
	LMF20309	Certificate II in Furniture Making	1 day/week	2 years	4
	UEE20207	Certificate II in Data and Voice Communications <small>* Pending registration, this program may be offered as UEE20211</small>	1 day/week	1 year	4
	UEE22007	Certificate II in Electrotechnology (Career Start) (Electrical) <small>* Pending registration, this program may be offered as UEE22010</small>	1 day/week	2 years	4
	MEM50205	Computer-Aided Drafting Program	1 day/week	1 year	6
	<b>Alexandra Hills</b>				
	CPC10108	Certificate I in Construction	1 day/week	1 year	3
	MEM10105	Certificate I in Engineering (Fitting)	1 day/week	1 year	3
	39278QLD	Certificate I in Plumbing Services	1 day/week	2 years	3
	AUR20705	Certificate II in Automotive Mechanical	1 day/week	2 years	4
	UEE22007	Certificate II in Electrotechnology (Career Start) (Electronics) <small>* Pending registration, this program may be offered as UEE22010</small>	1 day/week	2 years	4
	LMF20309	Certificate II in Furniture Making	1 day/week	2 years	4
	<b>Mount Gravatt</b>				
	MEM10105	Certificate I in Engineering (Fitting)	1 day/week	1 year	3
<b>Salisbury</b>					
MEM10105	Certificate I in Engineering (Sheet Metal)	1 day/week	1 year	3	
CPC50310	Para-professional Construction Pathway	1 day/week	1 year	4	

### Semester 2, 2012 commencement

	Semester 2, 2012 commencement				
	Code	Program name	Mode	Duration	QCE points
<b>North</b>	<b>Bracken Ridge</b>				
	Trade Pathways	Year 10 Trade Taster Program	1 day/week	6 months	--
<b>Eagle Farm</b>	<b>Eagle Farm</b>				
	Trade Pathways	Year 10 Trade Taster Program	1 day/week	6 months	--
<b>South</b>	<b>Acacia Ridge</b>				
	Trade Pathways	Year 10 Trade Taster Program	1 day/week	6 months	--

### 2012 Ongoing commencement

	2012 Ongoing commencement				
	Code	Program name	Mode	Duration	QCE points
<b>Open Learning</b>	<b>Open Learning</b>				



Southbank Institute of Technology, through their STEP (Southbank Tertiary Entrance Program) offers pathways through a range of Diploma programs for students in Years 11 and 12. Students enrol in Year 11.

*(A “sample” list of qualifications offered is listed on the opposite page.)*

Students attend Southbank one day per week for the 2 years, being able to exit at the end of Year 12 with a possible 8 units of competency which would add 8 credit points (Advanced Learning category) towards the student’s Queensland Certificate of Education (QCE).

Successful students are then eligible to complete the Diploma as a full-time student after Year 12 without having to apply through Queensland Tertiary Admissions Centre (QTAC).

There are also options for students to proceed into an Undergraduate Degree at university on completion of the Diploma.

### Benefits for Students

- Upon completion of Year 12, STEP students will be offered a confirmed entry with credit towards the Diploma they have been studying – (ability to bypass the QTAC process)
- Accumulate credit points towards their Queensland Certificate of Education
- Transition to university after completion of the Diploma
- Combine competency and strength of both the Institute and university

### Application Process

It is important for you to discuss your interest with your college’s STEP Coordinator. Enrolment into the program is not automatic. Students need to submit an Expression of Interest to Southbank, who then require Faith Lutheran College, Redlands to support or not support the application

- Candidates will submit and Expression of Interest
- Candidates to sit a pre-assessment test (August – date to be advised)
- Enrolments offered to suitable candidates (September)
- Enrol

### What next?

- Places will be offered from nominations received by the due date
- Any students not offered a place in the first instance will be waitlisted for places that may become available
- Nominations received after the due date will be offered places where available or will be waitlisted
- Schools will be notified of successfully placed students.
- Enrolment packs are sent directly to the students
- Students offered a place **must** enrol with SBIT by the nominated date to secure their place. Any students having difficulty enrolling by this date can contact SBIT to discuss alternative arrangements
- Students offered places after the first round are given specified time to accept the offer, enrol and pay.



## STEP COURSES OFFERED

STEP DIPLOMA	PATHWAY TO UNIVERSITY
Interior Technology	B Design (Interior Design) – GU
Nursing	B Nursing (QUT), B Nursing (ACU) B Nursing Science , B Nursing (GU)
Laboratory Technology	B Applied Science (Biotechnology or Microbiology) (QUT) B Science (Environment) (GU) B Science (Chemistry or Forest and Horticulture Science) (GU) B Science (Microbiology major) (GU) B Environmental Science (USC) B Science (Biomedical Science) (USC)
Children's Services	B Human Services – child and Family Studies (GU) B Education (Early Childhood) (QUT)
Fitness	B Sport and Exercise Science (USC)
Graphic Design	B Design (GU) B Fine Arts (Interactive & Digital Design) (QUT)
Visual Arts	B Fine Arts (GU)
Information Technology (Website Development)	B Information Technology (QUT), B Corporate Systems Management (QUT) B Games and Interactive Entertainment (QUT) B Information Technology (GU)
Accounting	B Commerce (Accounting) (GU) B Business (Accountancy) (QUT)
Hospitality	B Business (Tourism and Hospitality Management) (GU) B Business (Hotel Management) (GU)
Beauty Therapy	Under negotiation
Justice (Aboriginal & Torres Strait Islander students only)	B Justice Studies (QUT)
Community Services Work	B Human Services (GU) B Human Services (QUT) B Social Work (QUT)
Events	B Business (Events Management) (GU)
Tourism	B Business (Hotel, Tourism, Event, Real Estate and Property, Sport) (GU)
Interactive Digital Media	B Games and Interactive Entertainment (QUT) B Fine Arts (Interactive and Visual Design) (QUT)
Justice Administration	B Criminology and Criminal Justice (GU) B Justice Studies (QUT)
Business	B Business (GU) B Business (QUT) B Corporate Systems Management (QUT)

For more information about STEP Programs please refer to:

<http://www.southbank.edu.au/site/schools/STEP/>



